

# THANK YOU FOR JOINING US

Our presentation will begin momentarily

The Morganza to the Gulf Supplemental Environmental Impact Statement (SEIS) Public Scoping Period.

**Project Website:** <https://www.mvn.usace.army.mil/About/Projects/Morganza-to-the-Gulf/>



U.S. ARMY



US Army Corps  
of Engineers®



# MORGANZA TO THE GULF OF MEXICO, LOUISIANA

## SCOPING PUBLIC MEETING

July/August 2024



Stakeholders:



US Army Corps  
of Engineers®





# AGENDA

- Meeting Purpose
- Introductions
- The National Environmental Policy Act (NEPA) Process
- Project Overview
- Alternatives Considered
- Opportunities to Comment



US Army Corps  
of Engineers®



**NLLD**  
North Lafourche Levee District

# OPENING REMARKS



US Army Corps  
of Engineers®





# MEETING PURPOSE

**Solicit Input – We want to hear from you**

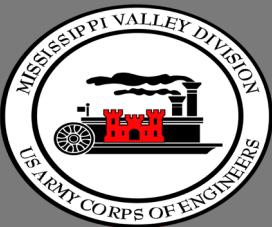
- Identify Problems and Concerns, unique habitat or things to be aware of
- Advise on solutions, feature/alternative considerations
- Problems or solutions we may have missed

**Inform**

- Provide background on USACE Study
- Ongoing collaboration efforts
- Authorized Project and Alternatives



**US Army Corps  
of Engineers®**



# COLLABORATION WITH OTHERS

## Non-Federal Sponsor

- Louisiana Coastal Protection and Restoration Authority Board
  - Terrebonne Levee and Conservation District
  - Governmental Stakeholders
- Natural Resource Agencies
- State of Louisiana and State Agencies
- City Officials
- North Lafourche Levee District
- South Lafourche Levee District

Considered/reviewed/incorporated previous and ongoing studies and recommendations



US Army Corps  
of Engineers®



**NLLD**  
North Lafourche Levee District



# WHAT IS NATIONAL ENVIRONMENTAL POLICY ACT?

**The National Environmental Policy Act (NEPA)** is a law that requires federal agencies to assess the environmental effects of their proposed actions prior to making decisions.

- Part of that process is obtaining public input and hearing comments.

## Goals of NEPA?

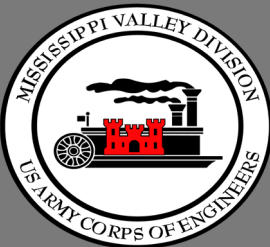
- Requires Federal agencies to consider their actions and decisions with respect to the environment.
- Ensure public and other agency involvement in the decision-making process.

## How is USACE complying with NEPA?

- Conducting an analysis of the effects of the proposed action on the environment and preparing an Environmental Impact Statement (EIS)
- Reaching out to public and agencies for input.



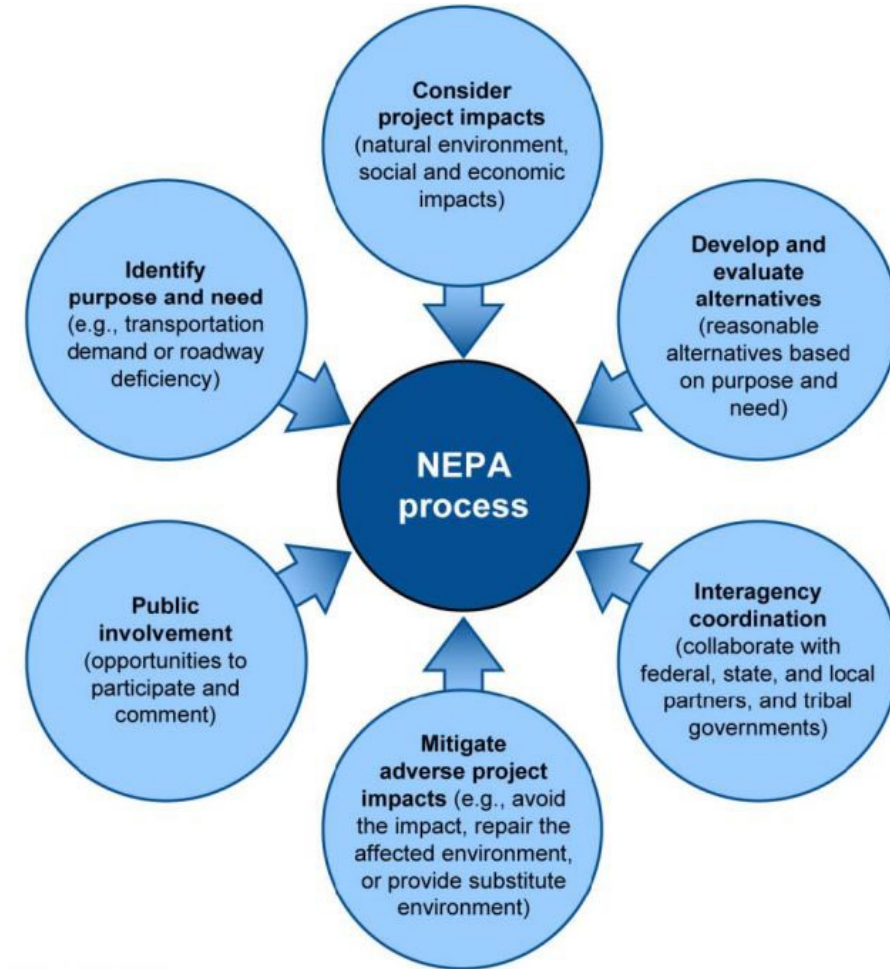
US Army Corps  
of Engineers®



# NATIONAL ENVIRONMENTAL POLICY ACT



- Requires all federal agencies to:
  - ❖ consider the environmental impacts of any proposed action;
  - ❖ develop a range of alternatives;
  - ❖ provide opportunities for the public to provide input; and
  - ❖ document the decision-making process so that interested and affected stakeholders can understand how the agency came to a decision.



Source: GAO. | GAO-15-71



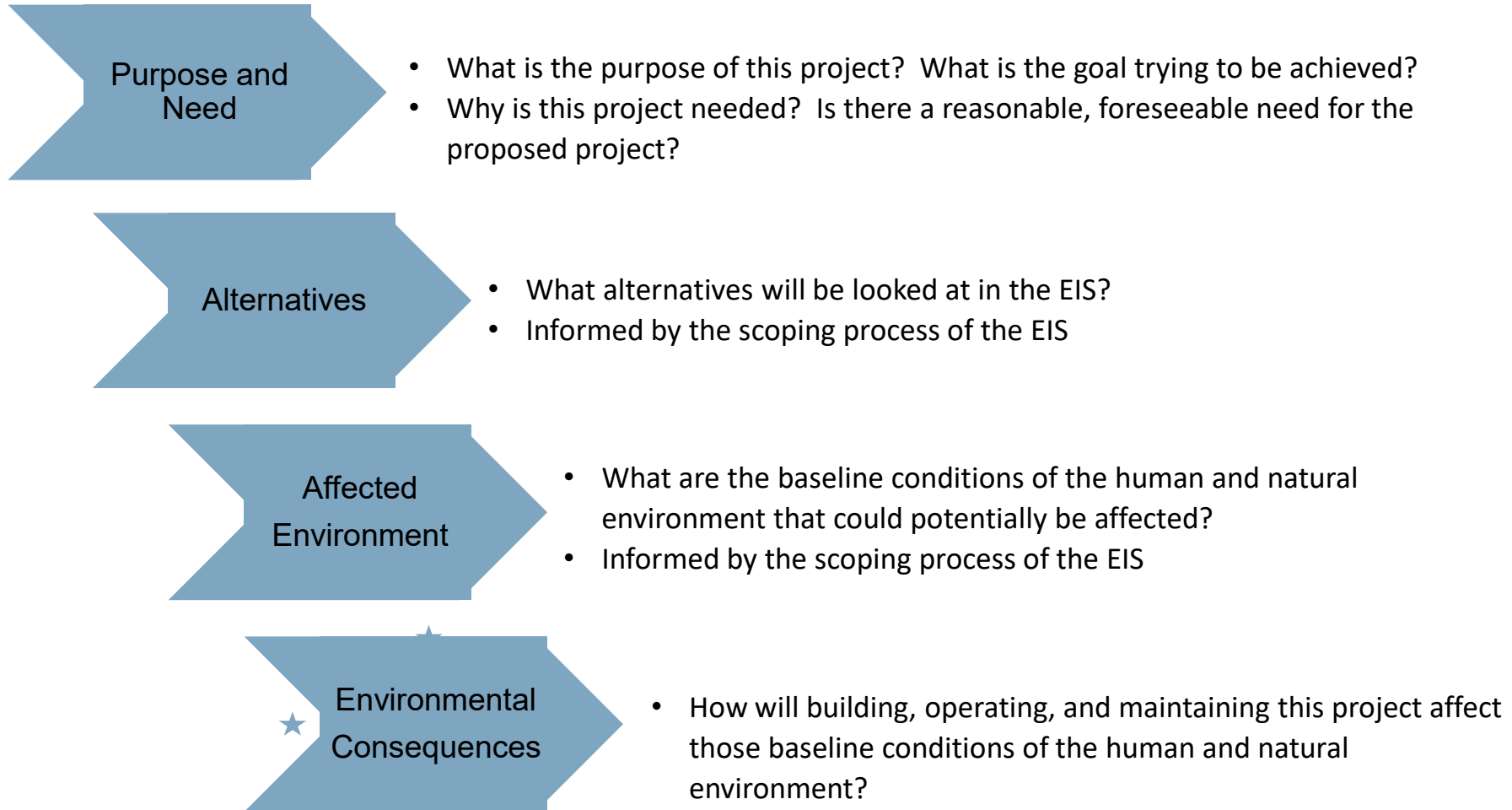
US Army Corps  
of Engineers®







# WHAT IS AN ENVIRONMENTAL IMPACT STATEMENT?



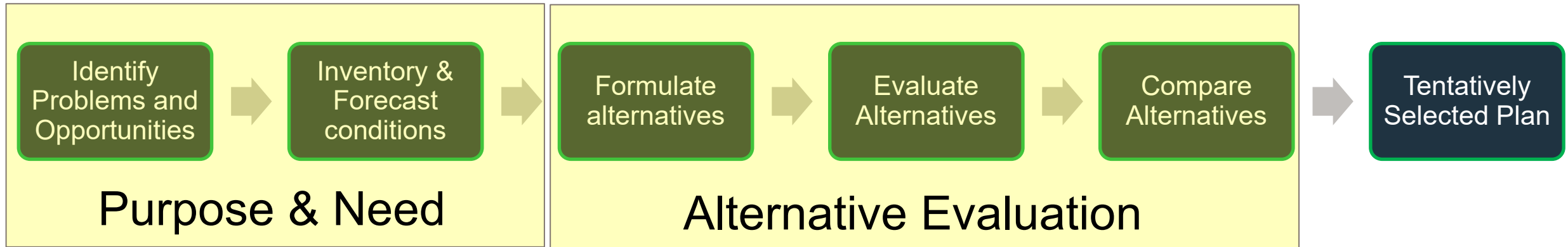
★ The public is given an opportunity to respond to the Draft EIS. This is where we are today.





# EVALUATION PROCESS

10



- ✓ Define the problem
- ✓ Inventory available data and information
- ✓ Forecast of future conditions
- ✓ Identification of key areas of uncertainty that will impact the project formulation
- ✓ Identification of the decision criteria that will be used to formulate, compare and select alternatives
- ✓ Formulation of alternatives based on critical thinking and professional expertise



US Army Corps  
of Engineers®







# AUTHORITY

Section 7002(3)5 of the WRRDA of 2014, Public Law (PL) 113-121, in accordance with the 2013 PACR/RPEIS and Report of the Chief of Engineers dated 8 July 2013, at an updated total cost of \$10.3 billion as follows:

*SEC. 7002. AUTHORIZATION OF FINAL FEASIBILITY STUDIES. The following final feasibility studies for water resources development and conservation and other purposes are authorized to be carried out by the Secretary substantially in accordance with the plan, and subject to the conditions, described in the respective reports designated in this section.*

## *(3) Hurricane and Storm Damage Risk Reduction –*

State	Name	Date of Report of Chief of Engineers	Estimated Initial Costs and Estimated Renourishment Costs
LA	Morganza to the Gulf	July 8, 2013	Federal: 6,695,400,000 Non-Federal: 3,604,600,000 Total: \$10,300,000,000



# PROJECT HISTORY

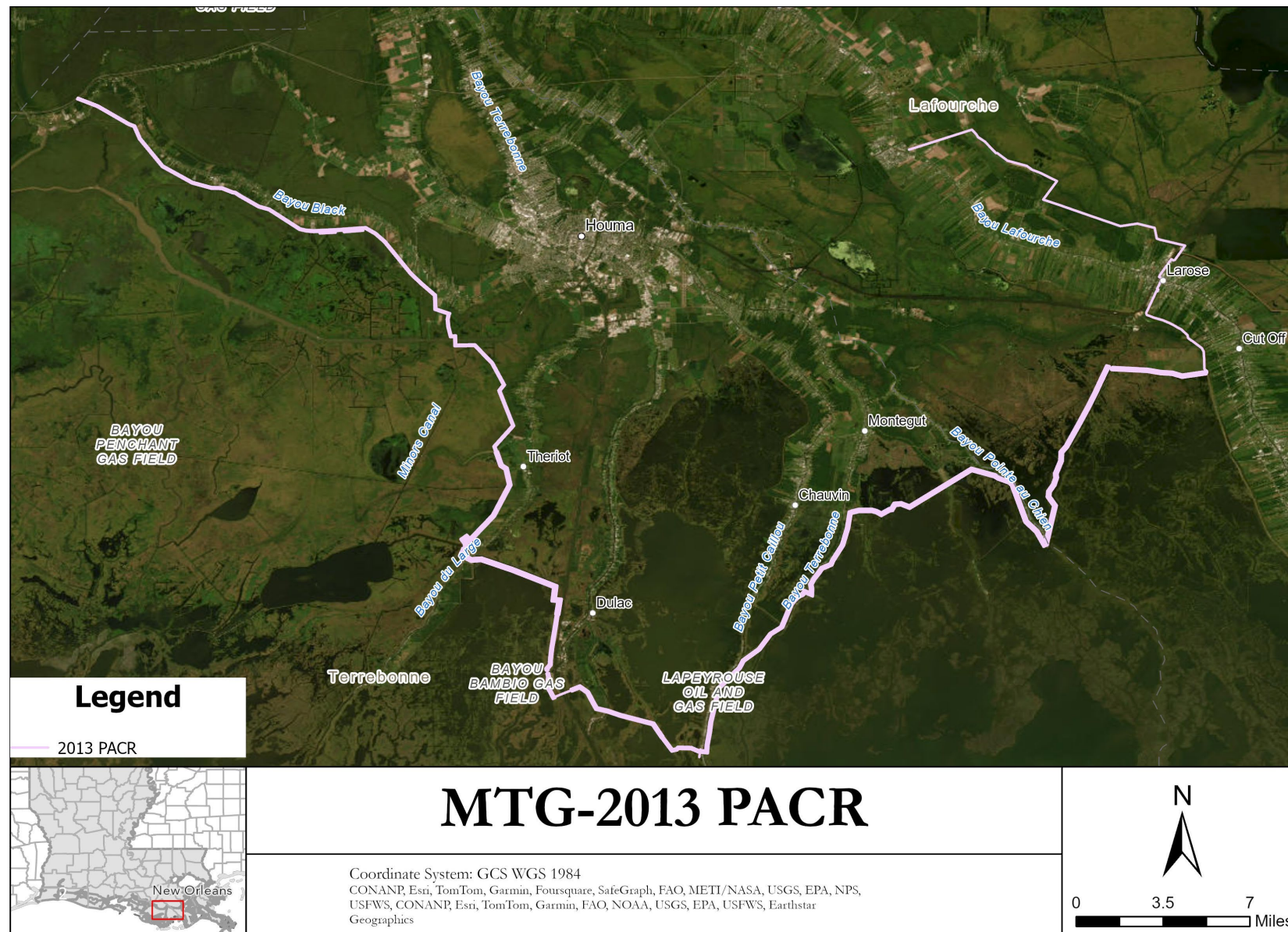
1992	Study Authorized
WRDA 2007	Construction Authorized - \$886.7M (72-mile system)
PACR 2013	Post Authorization Change Report updated design to Post-Katrina Standards
WRRDA 2014	Reauthorized 2013 - \$10.3B (first costs; 98-mile system)
4 DEC 2019	Memorandum of Understanding
15 DEC 2021	Engineering Documentation Report to update design and costs
28 DEC 2021	Partnership Agreement - USACE, CPRA, and TLCD







# PROJECT LOCATION AND 2013 ALIGNMENT



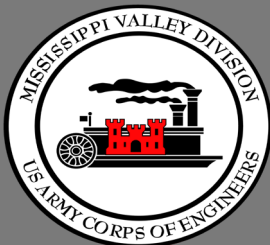


# PROJECT FEATURES

- 98-miles of earthen levee with final levee elevations ranging from 15 to 26.5 feet and levee widths from approximately 282 to 725 feet
- 22 floodgates on navigable waterways ranging in size from 20-foot stop log gates to 125-foot wide sector gates
- 23 environmental water control structures. Each structure is a box culvert with a sluice gate to allow tidal exchange.
- Houma Navigation Lock complex – 110-foot wide by 800-foot lock in the Houma Navigation Canal and an adjoining 250-foot-wide floodgate, and a dam closure.
- Mitigation for unavoidable environmental impacts – 3740 acres to 4100 acres



US Army Corps  
of Engineers®





# PURPOSE

Construct levees and associated structures that would reduce hurricane and storm damages by providing the one-percent annual exceedance probability level of risk reduction for the communities located within the MTG levee system in accordance with the project described in Section 7002(3) of WRRDA 2014, as updated by the 2021 Engineering and Design Report (EDR).



US Army Corps  
of Engineers®





# SIGNIFICANT RESOURCES IN THE STUDY AREA

- Threatened and Endangered Species such as West Indian manatee
- Views/Visual Resources
- Environmental Justice communities
- Recreation
- Historic & Cultural resources
- HTRW
- Mandalay National Wildlife Refuge
- Wildlife Management Areas



U.S. ARMY



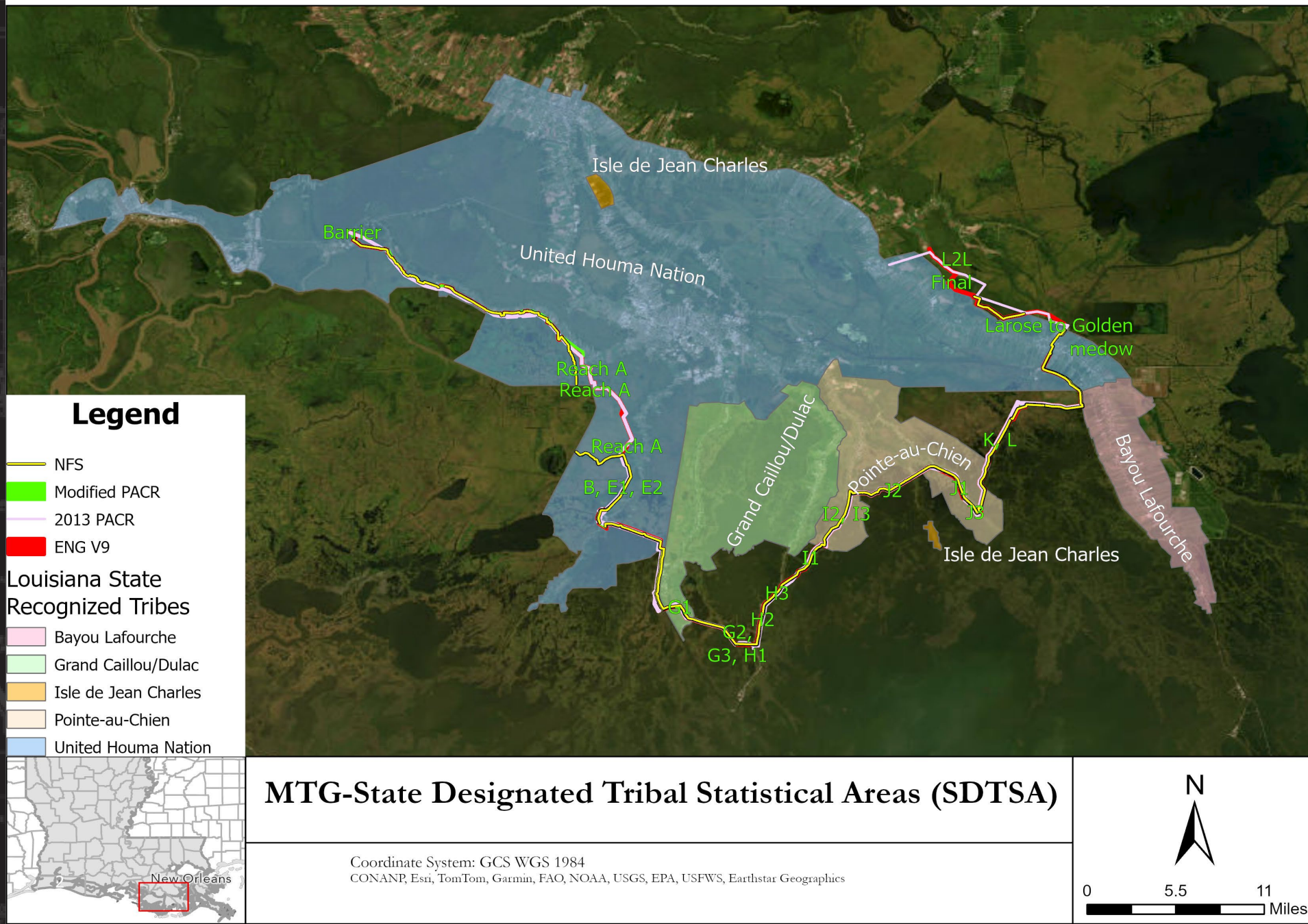
US Army Corps  
of Engineers®



# State Designated Tribal Statistical Areas within the Study Area



US Army Corps  
of Engineers®



## EXISTING CONDITIONS

Federal funds have been appropriated for design and construction of the project

- Reach A – Programmatic EA with Constructible Features
- Humble Canal – Preload EA

The non-Federal sponsor is using state and local funds to independently construct interim features in advance of the Federal project.



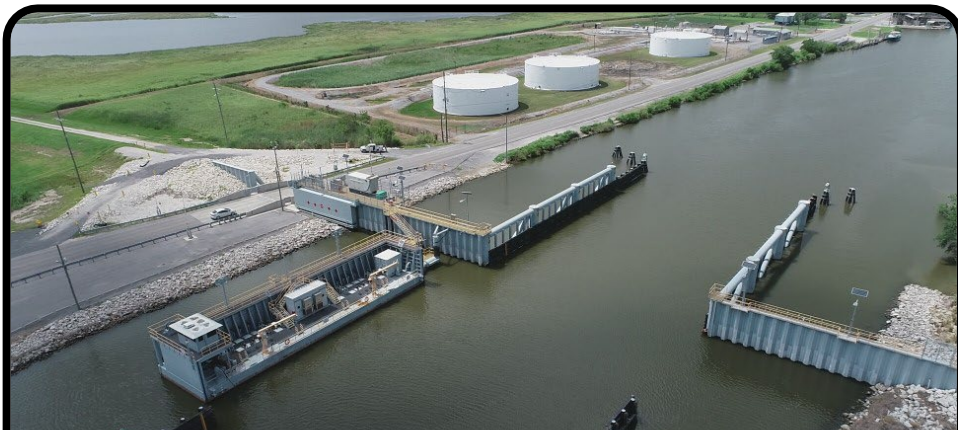
US Army Corps  
of Engineers®





# NON-FEDERAL SPONSOR EFFORT

- Invested over \$1.1B along MTG alignment
  - 80+ miles of levee constructed
  - 25+ structures
  - Houma Navigation Canal Lock Complex
  - Ongoing levee lifts
- Collaborating on current designs
- Benefits demonstrated 99% residential flooding reduction between 2005 (Hurricane Rita) and 2019 (Hurricane Barry) but still vulnerable to greater storms



Petite Caillou Floodgate and Road Gate - 2016

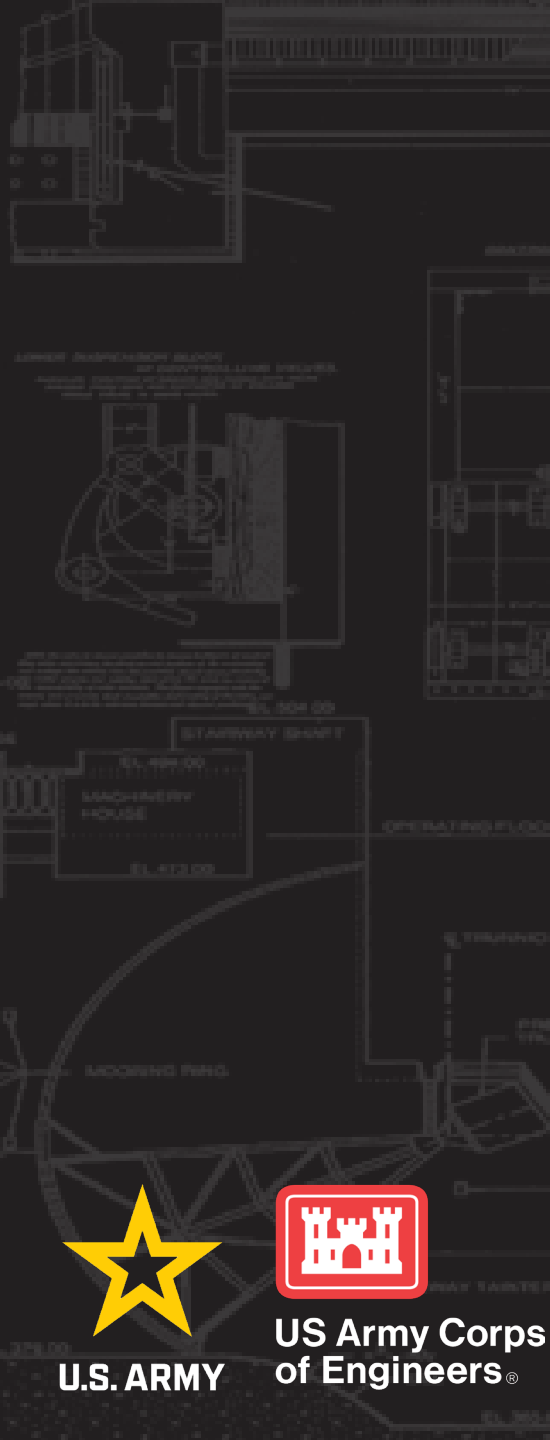


Reach J-2 and Mitigation Terracing



Conceptual Design for the Houma Navigation Canal Lock Complex





U.S. ARMY



US Army Corps  
of Engineers®



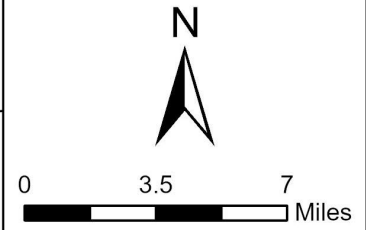
**Legend**

— NFS



## MTG-NFS constructed alignment

Coordinate System: GCS WGS 1984  
CONANP, Esri, TomTom, Garmin, Foursquare, SafeGraph, FAO, METI/NASA, USGS, EPA, NPS,  
USFWS, CONANP, Esri, TomTom, Garmin, FAO, NOAA, USGS, EPA, USFWS, Earthstar  
Geographics





# Morganza to the Gulf of Mexico, Louisiana







# MORGANZA TO THE GULF LEVEE SYSTEM FEDERAL WORK UNDERWAY

22



**Federal Funding: \$469.31M Appropriated**

## FY 2021 New Start--\$12.46M

- Humble Canal Preload & PED

## FY 2022 Bipartisan Infrastructure Law-- \$378.52M (Design & Construction)

- Reach A Levee portion
- Lockport to Larose Levee portion
- Minors Canal Floodgate
- GIWW West Floodgate
- GIWW East Floodgate
- Humble Canal Floodgate

## FY 2022 Community Fund (Earmark)-\$19.33M

- Reach F Design
- Reach J-2 Design
- Shell Canal Floodgate Design

## FY 2023 Community Fund (Earmark)-\$31M

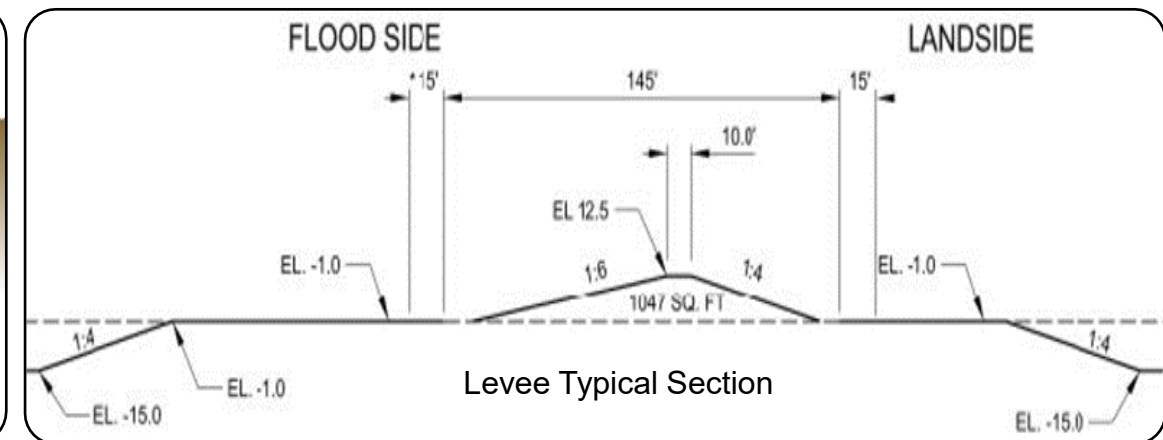
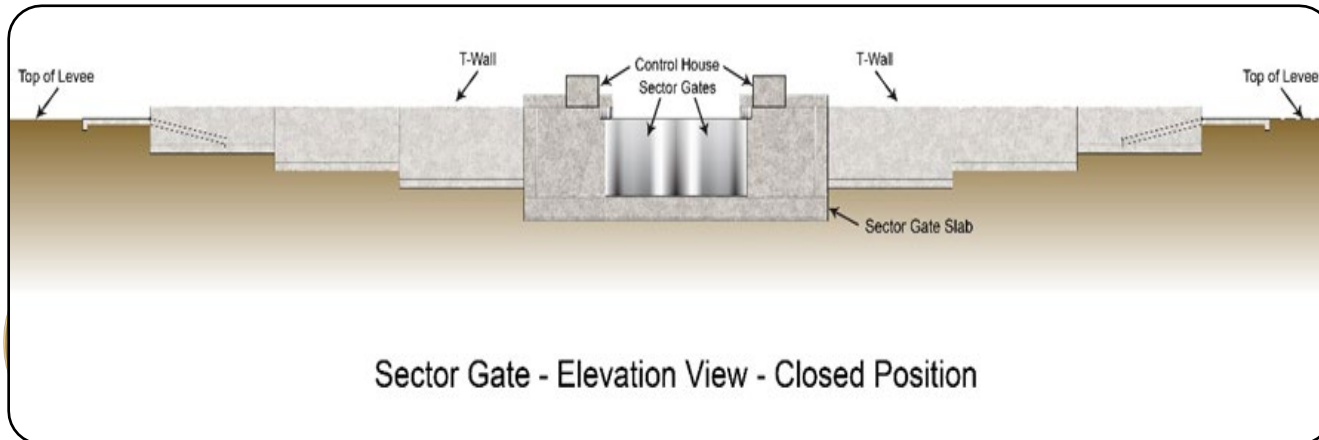
- Reach L Design
- Reach K Design
- Bayou Terrebonne Floodgate Design

## FY 2024 Community Fund (Earmark)-\$28M

- Reach A Levee Const. (Contract 1)
- Design of Critical Features
- Environmental Coord.



# EXAMPLES OF PROJECT FEATURES

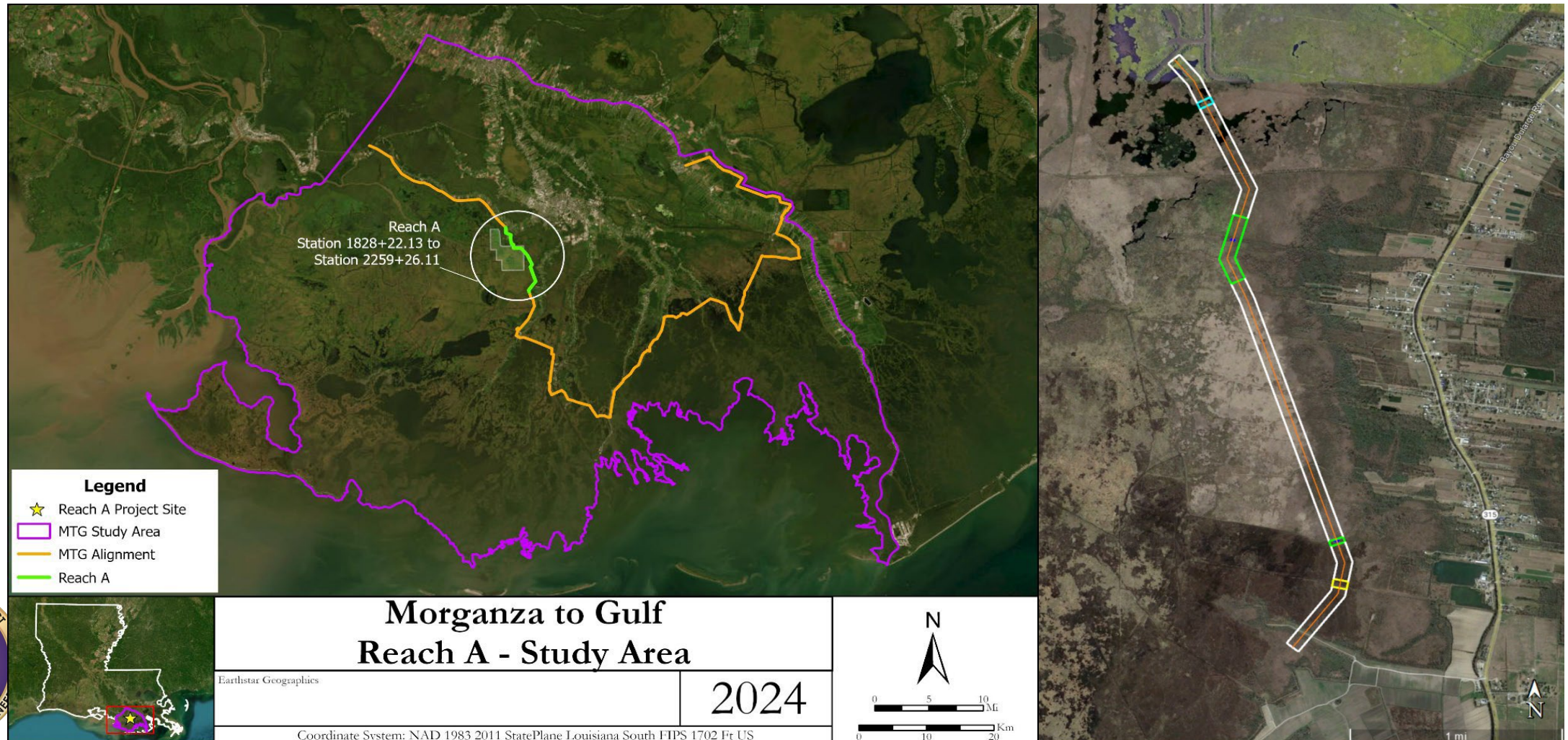






# REACH A

- Final EA and signed FONSI May 9, 2024
- Programmatic and Constructible Features
- Constructible: 3.26 miles of earthen levee south of the GIWW



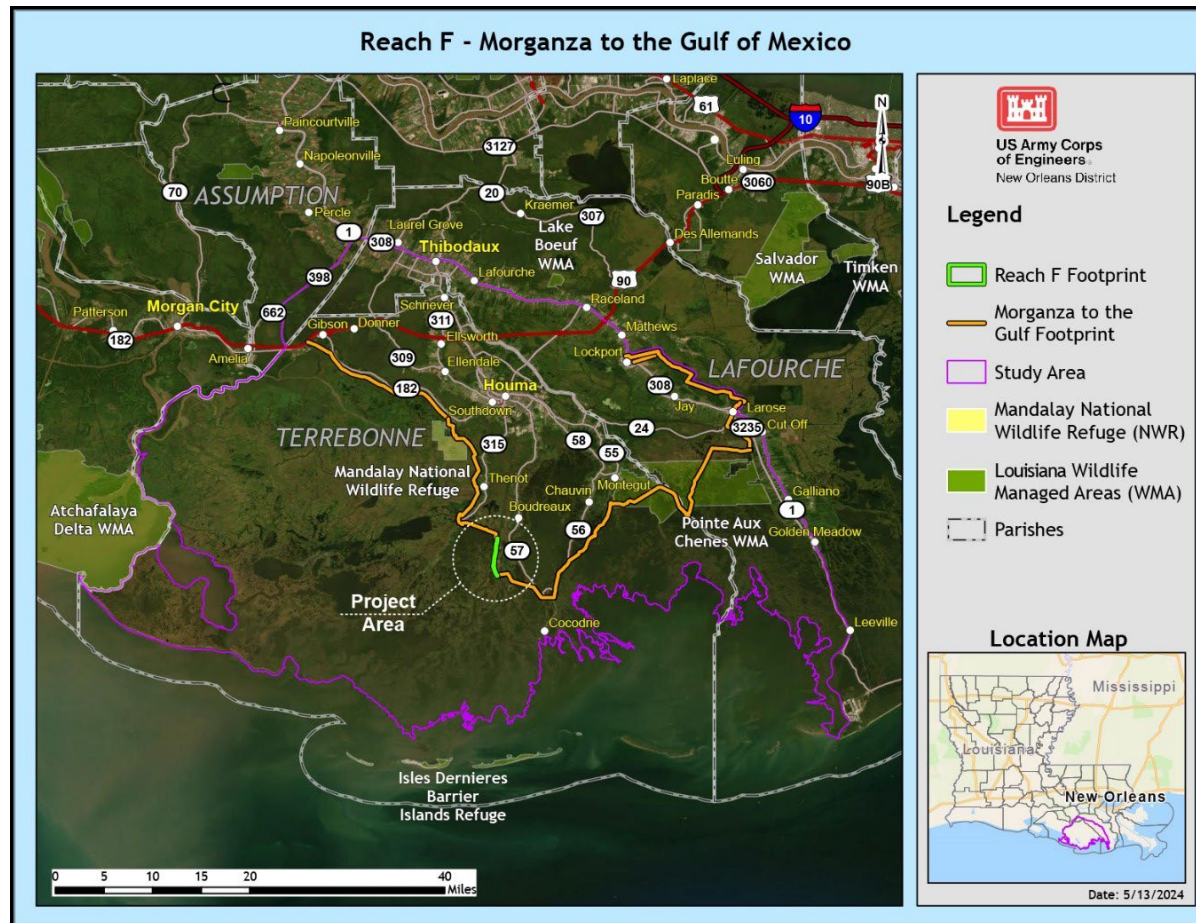




# REACH F



- Draft EA and FONSI expected release in the new year of 2025.
- Constructible Feature of the 2013 EIS
- 4.33 miles of earthen levee near the intersection of Houma Navigation Canal and Falgout Road along western bank of HNC







# FUTURE WITHOUT PROJECT

Most likely condition of the resources and human environment if no additional actions are taken

## Flood risk

- Continued sea level rise
- Continued subsidence

## Increased storm damages

- Frequency
- Intensity

## Local Sponsor Construction Projects



US Army Corps  
of Engineers®





# EVALUATION OF ALTERNATIVES



## 1. No Action Alternative

Existing constructed Alignment

## 2. 2013 Alignment Alternative

## 3. Modified PACR Alignment Alternative - combination of authorized alignment and constructed alignment

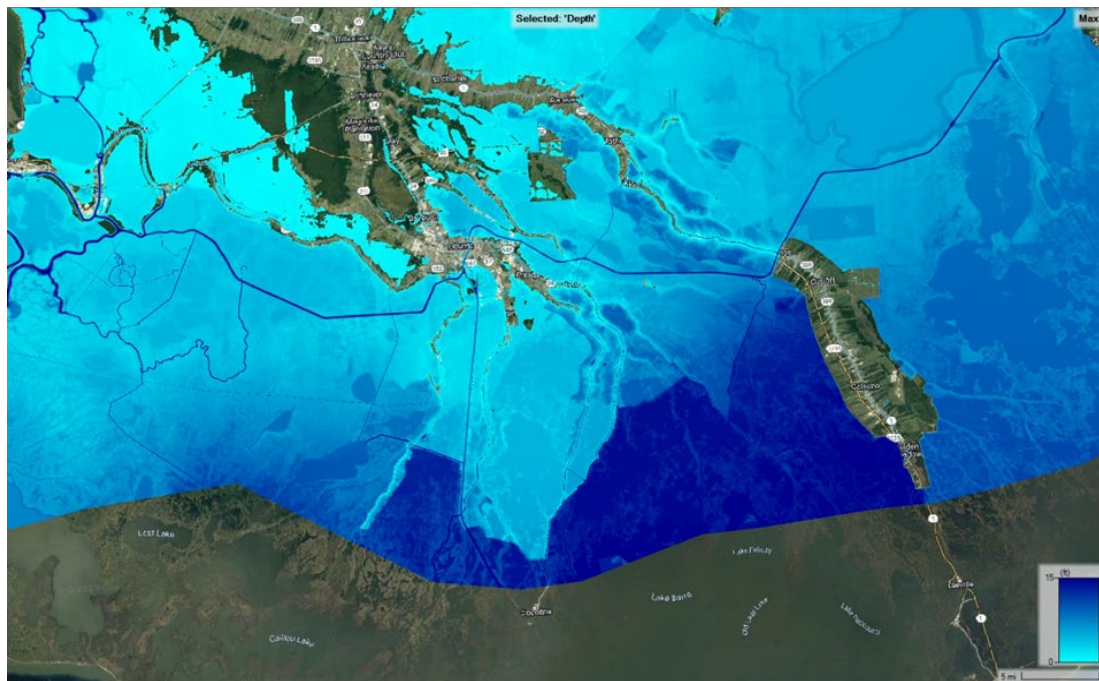


US Army Corps  
of Engineers®





# TERREBONNE AND LAFOURCHE FLOODING



*1% AEP Event, Existing Conditions,  
Storm Surge Only, 2035*



*1% AEP Event, Proposed Conditions,  
Storm Surge Only, 2035*



US Army Corps  
of Engineers®



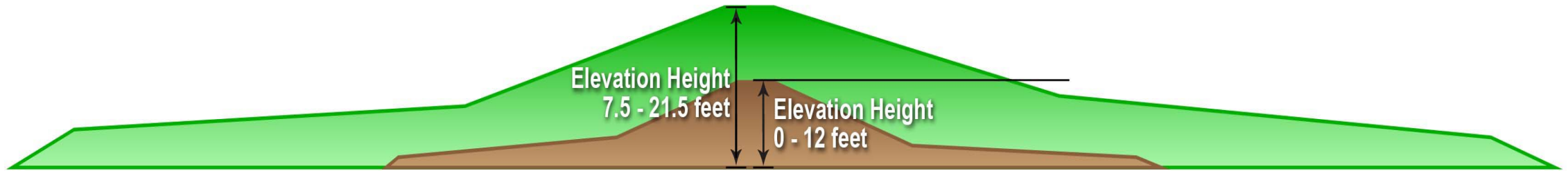






# EXISTING CONSTRUCTED VS. PROPOSED ALIGNMENT



## Morganza to the Gulf Levee Construction



-  Federal Levee (Construction Underway) to provide 100-year LORR
-  Existing Levee (Constructed by State, NLLD, TLCD)

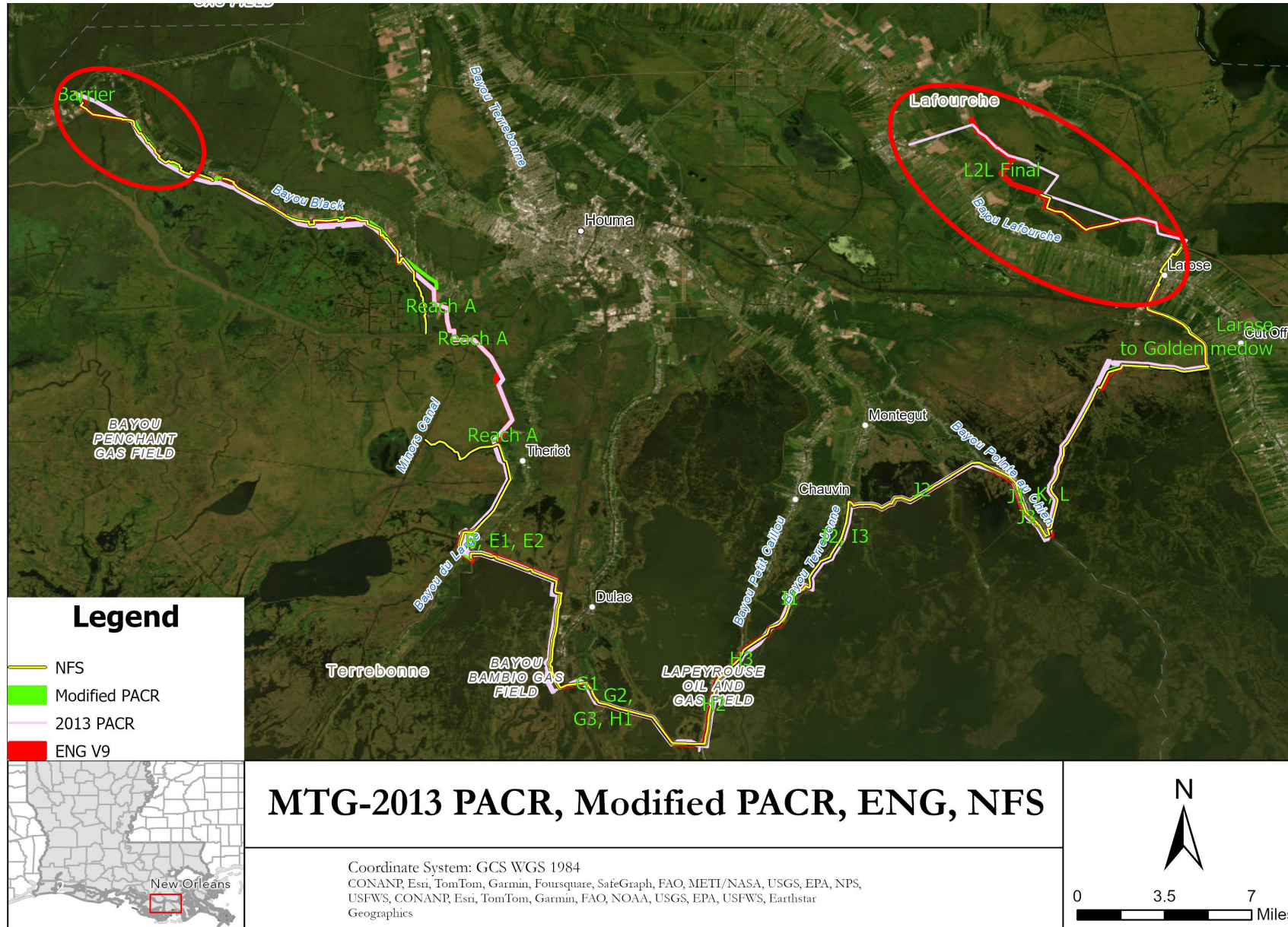


US Army Corps  
of Engineers®





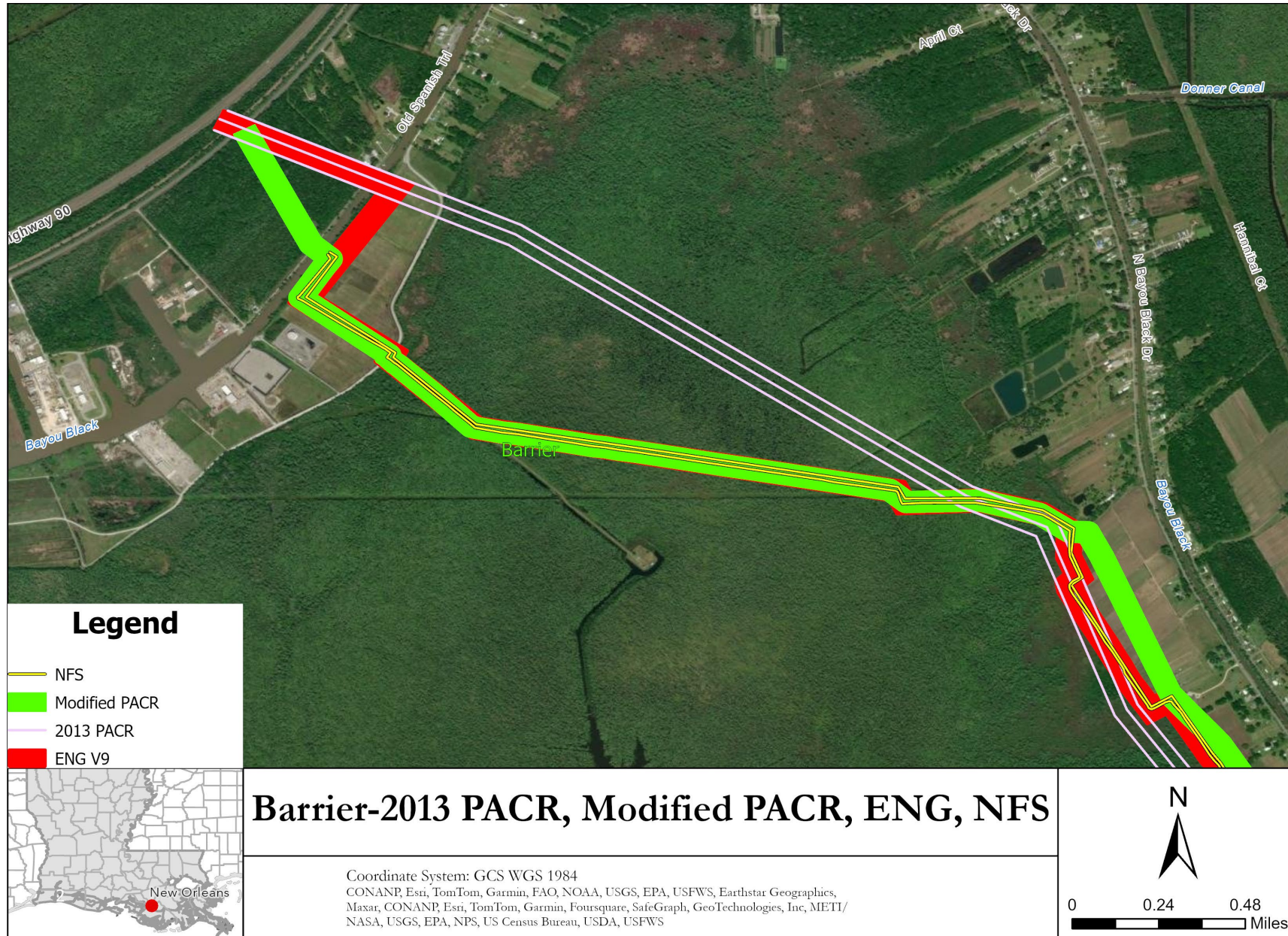
# ALTERNATIVE EVALUATION







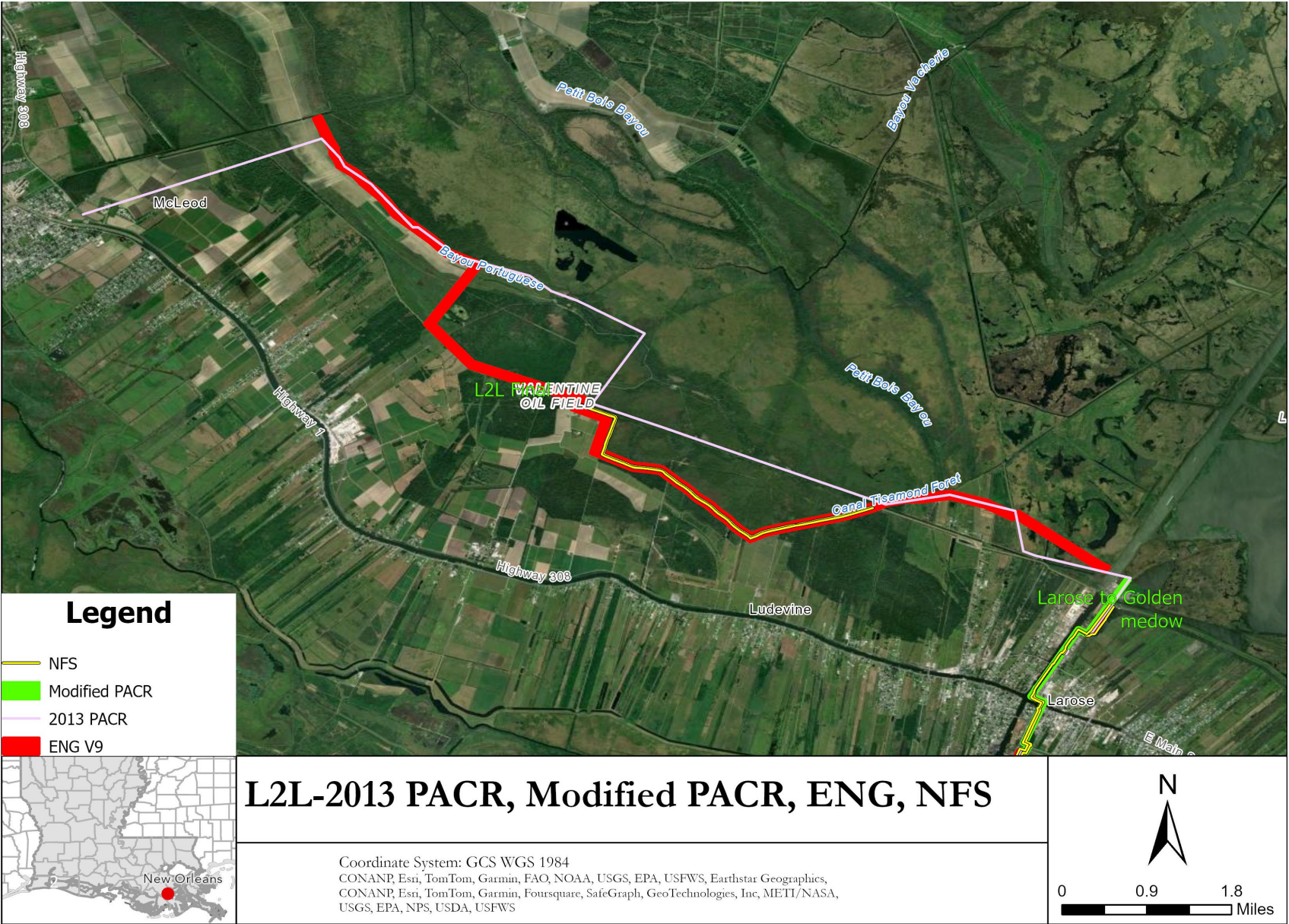
# BARRIER REACH







# LOCKPORT TO LAROSE REACH





# OPPORTUNITIES

- Provides resiliency to combat sea level rise
  - Design includes projected sea-level rise through 2085
- Design considers increasing tropical cyclone frequency and strength
- Environmental control structures allow tidal exchange while protecting vulnerable wetlands
- Marsh recovery and preservation
- Exploring creative mitigation opportunities
  - Addressing salinity increases through operational changes
  - Adaptive management



US Army Corps  
of Engineers®







# COMPENSATORY MITIGATION REQUIREMENTS

34



Required for unavoidable habitat impacts associated with the construction of the project.

- Specific procedures followed to develop compensatory habitat mitigation plan are found in Engineer Regulation 1105-2-100, Appendix C
- Follows USACE Planning Process including: objectives, constraints, identification and assessment of needs and potential sites, ED design, cost estimate, RE, cultural and HTRW investigations and cost estimates, WVA, Incremental Cost Analysis, TSP plan selection



US Army Corps  
of Engineers®





# SEIS PATH FORWARD ALL HABITAT TYPES



- Fresh/ Intermediate Marsh – Completed under Reach A EA effort
- Bottomland Hardwood (Reach A Constructable Features) – Completed under Reach A EA
- Brackish/ Saline Marsh – Ongoing under Reach F EA
- Bottomland Hardwood (all other reaches) – ***Upcoming SEIS***
- Swamp – ***Upcoming SEIS***



US Army Corps  
of Engineers®

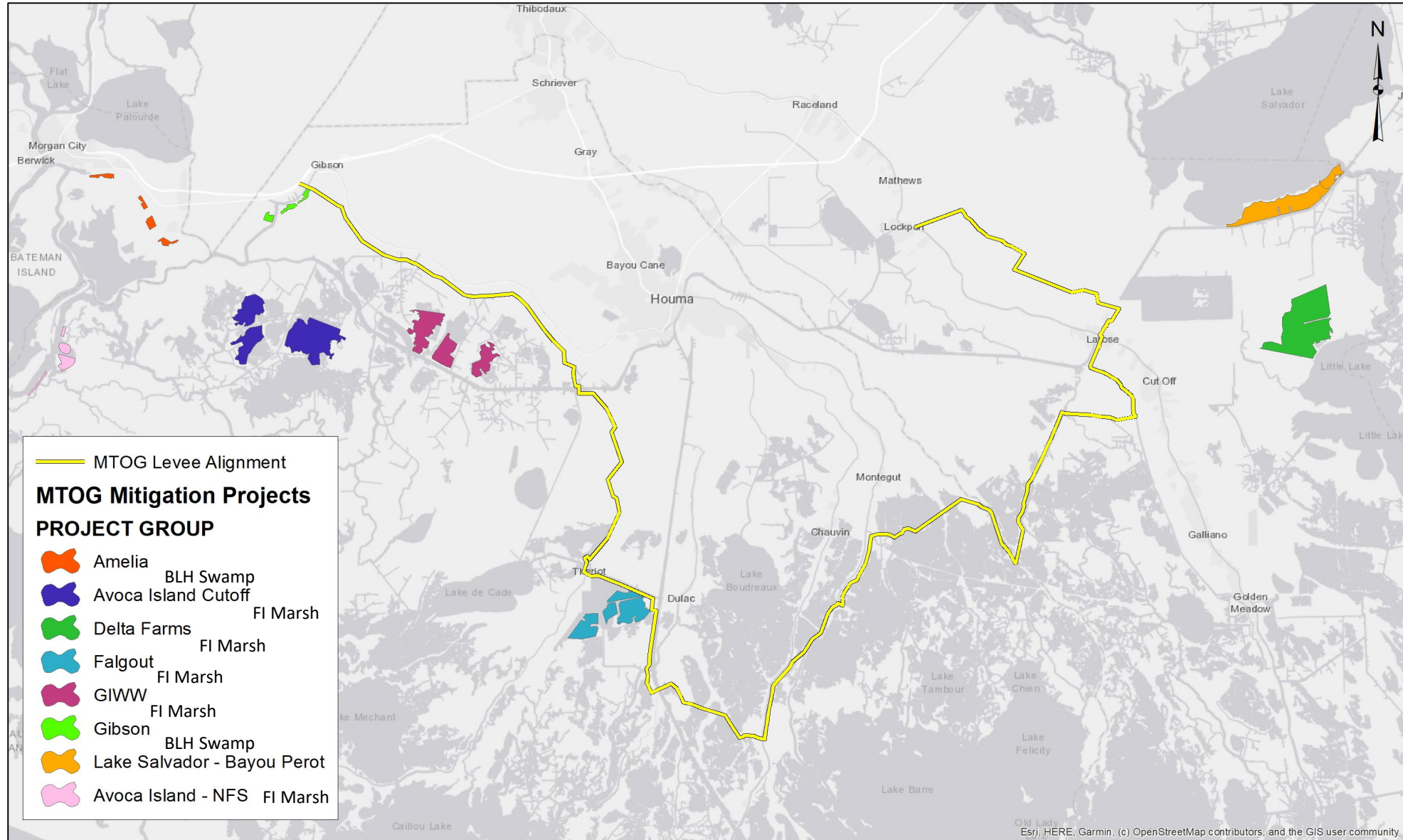






# F/I MARSH FINAL ARRAY

## Morganza to the Gulf - Mitigation Projects - Reach A





# ENVIRONMENTAL JUSTICE

37



- What is Environmental Justice (EJ)
  - EO 14096 defines EJ as the just treatment and meaningful involvement of all people, regardless of income, race, color, national origin, Tribal affiliation, or disability, in agency decision-making and other Federal activities that affect human health and the environment and
- Provide Flood Risk Management to Areas of EJ concern which are communities identified as being economically vulnerable or environmentally burdened.
  - Of the 200,000+ residents in the Terrebonne and Lafourche Parishes, 86,393 live in disadvantaged census tracts
    - 30% minority population
    - 20% of residents live in poverty
- Anticipate alignment with Justice40 Initiative
- EJ Public Outreach is performed to inform residents in areas of EJ concern of the project and its potential impacts. Feedback from residents is critical to the process.



US Army Corps  
of Engineers®







# PATH FORWARD

- Draft Supplemental Environmental Impact Statement (SEIS):
  - Incorporate scoping comments
  - SEIS will go out for public response when complete
  - Public Meetings
- Complete SEIS (ROD) in 2026



US Army Corps  
of Engineers®





## TO SUBMIT COMMENTS/ PROVIDE INPUT

Comments accepted through August 26, 2024

**Comment Cards Available Tonight**

Email: [mvnenvironmental@usace.army.mil](mailto:mvnenvironmental@usace.army.mil)

Address:

U.S. Army Corps of Engineers, New Orleans District  
Attn: CEMVN-PDS  
7400 Leake Avenue, New Orleans, Louisiana 70118

**Additional Project Information:**

<https://www.mvn.usace.army.mil/About/Projects/Morganza-to-the-Gulf/>



US Army Corps  
of Engineers®







# INPUT WE NEED FROM YOU



1. Do the alternatives meet the needs of the community?
2. Are there additional problems related to flooding in the project area that are not captured? Or not addressed by the proposed alternatives?
3. With what storm did your community see the most damages? How often are you seeing flooding?
4. Are there measures or alternative strategies that would address the problems more effectively?



US Army Corps  
of Engineers®





US Army Corps  
of Engineers®

# PUBLIC SCOPING MEETINGS

July 30, 2024

North Lafourche Levee District  
3862 Highway 1, Raceland, LA 70394  
6:00 – 8:00 pm

August 1, 2024

Montegut Fire Station  
1105 LA-55 Montegut, LA 70377  
6:00 – 8:00 pm

August 5, 2024

Barry P. Bonvillain Civic Center  
346 Civic Center Blvd, Houma, A 70360  
6:00 – 8:00 pm

August 7, 2024

Virtual Scoping Meeting  
MVK HQ Building



# TO SUBMIT COMMENTS

Comments accepted through August 26, 2024



US Army Corps  
of Engineers®

Email: [mvnenvironmental@usace.army.mil](mailto:mvnenvironmental@usace.army.mil)

Address:

Eric Williams, CEMVN-PDS  
7400 Leake Ave.  
New Orleans, LA 70118

Project Website:

<https://www.mvn.usace.army.mil/About/Projects/Morganza-to-the-Gulf/>



US Army Corps  
of Engineers®

# THANK YOU FOR JOINING US